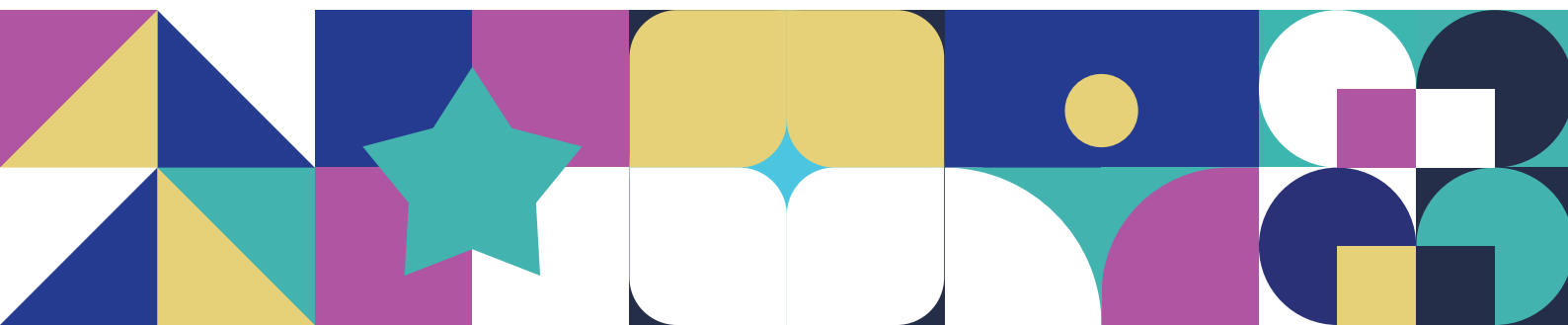
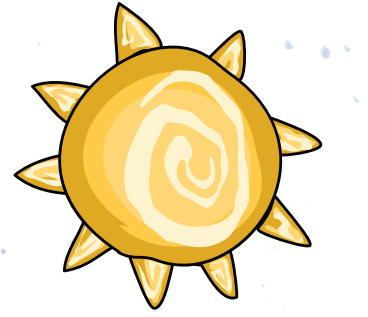


## **EPISODE 11**

# **Hope for the Future**



## Ages 4-7:



When Astronaut Nicole Stott went to space, she took her paints with her and drew the planet as she saw it.

Now it's your turn to draw your favorite place!

You can draw by yourself or work with your friends so that all your pictures connect, or you can make one big drawing together!

Share your results using #ELFInSpace



## Ages 14+:



Nicole Stott is not only an astronaut, but she also happens to be an aquanaut! She has lived both in space and deep underwater. Both these environments are inhospitable to humans! While humans can visit these locations, many factors make it difficult to stay there for too long.

Can you name some factors that make space uninhabitable? What about underwater?

**HINT:** consider what we need to survive, such as the air we breathe, food to eat, and water to drink.

Can you think of any solutions to these problems? Use your school library and the internet to research what these factors are and share the answers with us.

Share your ideas using #ELFInSpace